



The European B2B Forum for the Electronics Industry

June 2010



The European B2B Forum for the Electronics Industry

EDIFICE

THE European **B2B User Group** for business partners with interests in computing, electronics and telecommunications.

**Our mission** is to drive global standardized B2B adoption through best practice, information sharing and influencing of standards development

**Our focus** is on collaborative Business processes using B2B solutions based on global standards

EDIFICE provides a forum for users and solution providers which drives and enables global standardized B2B adoption in Europe

EDIFICE's collective experience and best practice sharing will help existing and potential members achieve their B2B goals

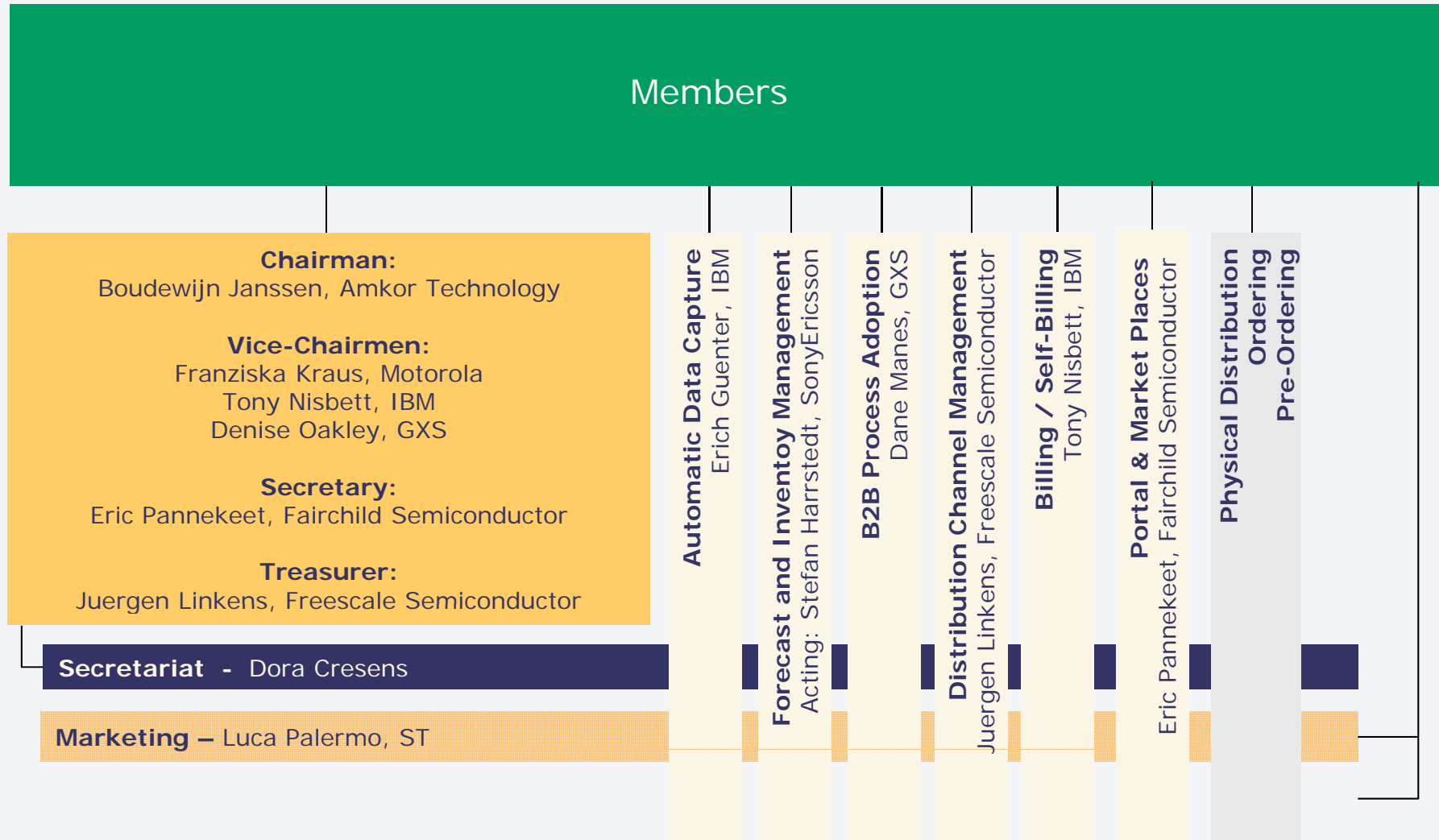
EDIFICE is a B2B competence centre, setting direction, creating awareness and providing learning opportunities

EDIFICE ensures that European ways of working are reflected in global standards



## EDIFICE is a member driven organisation

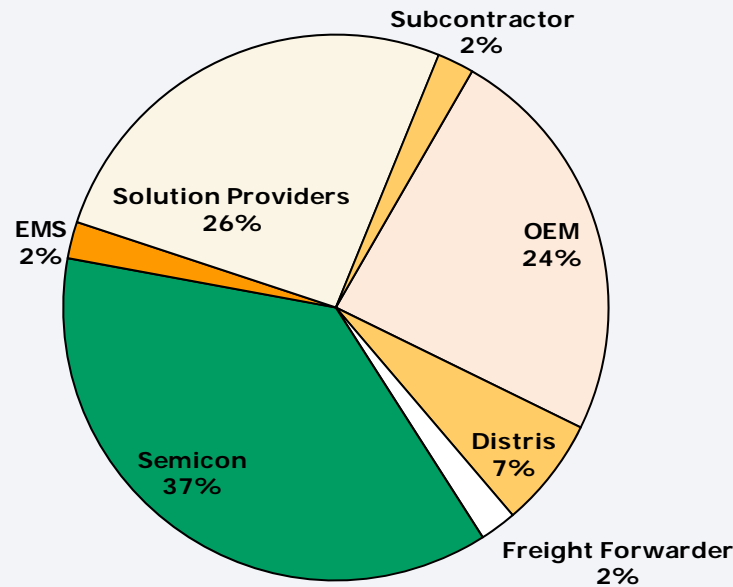
### Members





## 46 EDIFICE Members

Alcatel-Lucent  
Amkor Technology  
Analog Devices  
Arrow Northern Europe  
Atmel W&M  
Avnet  
Cisco Systems  
Crossgate  
DHL  
E2open  
Elcoteq Network Corporation  
Ericsson  
Fairchild Semiconductor  
Foxconn  
Freescale Semiconductor  
Fujitsu Microelectronics  
GEFEG  
Gemalto  
GXS  
HP  
Hitachi  
IBM  
Inovis



Intel  
Itella Information  
Microsoft  
Motorola Inc.  
Murata Elektronik  
National Semiconductors  
Nokia  
Nokia Siemens Networks  
NXP Semiconductors  
PipeChain  
Robert Bosch  
Rutronik  
SAP  
Seeburger  
Siltronic  
Sony Ericsson  
STMicroelectronics  
Sun Microsystems  
Telcordia  
Texas Instruments  
Toshiba  
Trustweaver  
Xilinx  
Zetex



The European B2B Forum for the Electronics Industry

## Liaisons





## EDIFICE, a catalyst for collaboration

### Business area Task Groups

- Initiatives are taken by a member company
- Open to all Partners with interest (also non-members) in the areas of : Automatic Data Capture, Billing, B2B Process Adoption, Distribution Channel management, Forecast & Inventory Management, Portals & Market Places
- EDIFICE provides a full support structure

### Deliverables:

- B2B Deployment Matrix / Messages & Processes
- B2B Implementation Guideline Repository



## Collaboration @ EDIFICE

- Knowledge sharing:
  - B2B Deployment Matrix
  - B2B Guideline Repository
  - Plenary Presentation Repository
  
- 3-times a year two-day Plenary meetings across Europe
  - Member sponsoring
  - Average 60 participants
  - Average 10 observers
  - Presentations around specific theme
  - Liaison Updates: AsiaB2B, OAGi, Odette, RosettaNet
  - Member B2B Strategy sharing
  - Observer session
  - Task Group Break-out sessions
  
- Collaborate in Business Area Task Groups...



## Collaborate in EDIFICE Task Groups

### ▪ **Automatic Data Capture (ADC)**

creates ISO/IEC conforming guidelines for labels using bar-/2D codes and RFID as well as appropriate data structures for the different layers in the supply chain (product, package, pallet, shipment)

- 2010 delivered the EDIFICE guideline for the use of RFID for Supply Chain Management
- 2010 plans the EDIFICE guideline for delivery documentation (Delivery Note / Packing List) and the revision of the WW unique identification scheme guideline

### ▪ **Distribution Channel management (DCM)**

discusses the challenges between trading partners in distribution channels. Key topics are in the areas of Distribution Supply Chain Optimization (DSCO), Design Win, Quotation and Ship & Debit

- In 2009, DCM triggered RosettaNet activities resulting in the publication of 2 one-way PIPs for each two-way PIP
- 2010 plans to update the Sales Report (SLSRPT) and the Ship from Stock and Debit Claim (SSDCLM) guidelines and the DCM Business Modelling Guide



## Collaborate in EDIFICE Task Groups

### ■ **B2B Process Adoption (BPA)**

looks at how to innovate and optimise B2B activities with trading partners of all sizes and capabilities. Targeting reduction of complexity and cost and improve implementation time.

- 2010 Deliverables:
  - Industry B2B Message Guideline Repository
  - Education Material for Business processes

### ■ **Billing-eInvoicing (BILL)**

guides you on how to audit your company's eInvoicing/billing processes and advices on how to stay compliant with the respective EU Directives

- 2010 plans are to continue Contribution to the CEN/ISSS programme and liaise with the European Expert Group on eInvoicing



## Collaborate in EDIFICE Task Groups

- **Forecast & Inventory Management (FIM)**

provides best practice information on ways to implement & optimise collaborative forecasting business exchanges (incl. Consumption, inventory movements and even self-billing)

- **Other Business areas of collaboration:**

- Portals & Market Places
- Physical Distribution
- Ordering
- ...



## EDIFICE ...

- Is the European RosettaNet User Group
- Is the UN/EDIFACT User Group for the Industry
- Is Issuing Agency for License Plate (ISO/IEC 15459)
- Launched a sister organisation in Asia in 2009
  - [www.asiab2b.org](http://www.asiab2b.org)



## EDIFICE Deliverables

- PUBLICLY AVAILABLE:
  - [www.edifice.org/](http://www.edifice.org/)
  - [Repository.edifice.org/](http://Repository.edifice.org/)
  - [Deployment Matrix eXtension : TI.edifice.org/](http://Deployment Matrix eXtension : TI.edifice.org/) (other companies to follow)
  
- MEMBERS ONLY:
  - [Plenary Presentation Repository](#)
  - [Deployment Matrix](#) – B2B Message Implementations
  - [Collaborate.edifice.org/](http://Collaborate.edifice.org/)
  - Change requests to EDIFICE endorsed documents



## Why join EDIFICE

- Benefit from B2B implementation experiences of leading HighTech companies in Europe
- Leverage available deliverables such as process and message implementation guidelines
- Stay up-to-date regarding B2B technology, processes, solutions and future developments
- Driving and shaping developments in the European B2B arena
- Become more efficient in your daily business



## Benefits of being a member of EDIFICE

- *Networking opportunity to meet with your competitors; customers; colleagues from other Regions*
- *learn from experiences shared by both Business and IT experts*
- *reach industry agreement to standardise various business processes*
- *Have access to external organisations (Standards bodies & Industry groups)*
- *Influence International standards*
- *Get exposure for your company within the industry*
- *An opportunity to take a leading role in the organisation and set its road map*
- *Free-of-Charge participation for yourself and your business partners to the Plenary meetings organised across Europe*
  
- *Read what our membership says on the next slide:*



## We, EDIFICE members ...

- *save time and money by implementing automated processes based on established international industry standards at the lowest possible cost of ownership and maximum efficiency.*
- *are faster in resolving issues and influencing developments with direct access to knowledge, best practices and business process experts. All of this resulting in a common solution which can be adapted within the entire industry.*
- *profit from excellent trading partner, competitor and solution provider networking opportunities in particular during the various EDIFICE two-day Plenary meetings that are organised throughout Europe and are free of charge.*
- *stay up to date in a fast moving market which is critical. EDIFICE enables us to be on top of new Technology trends, developments and fast strategy realignments.*
- *have easy access to a large portfolio of collaborative projects, solutions and people from major global industry organisations and International standardisation bodies such as Automotive, Banking, Transport & Logistics, ISO/IEC, UN/CEFACT, OAGi, RosettaNet, ...*
- *encourage all our Trading Partners to join the community as a member!*



## More Information

- [www.edifice.org](http://www.edifice.org)

For more information contact the secretariat

Dora Cresens

+32 475 85 40 39

[Dora.cresens@edifice.org](mailto:Dora.cresens@edifice.org)